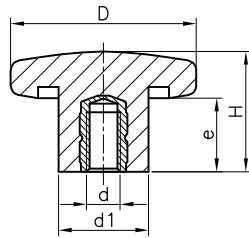


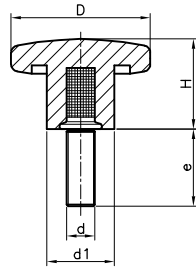
1126K DIN 6336 K WITH THREADED INSERT



Code	D	H	d	e	d1	Color
112620301	20	13	M4	8	10	Black
112625301	25	16	M5	9	12	Black
112632301	32	20	M6	10	13	Black
112640301	40	25	M8	14	19	Black
112650301	50	32	M10	17	20	Black
112663301	63	40	M12	19	23	Black
112680301	80	50	M16	27	30	Black

Threaded female brass insert.
PF: Black Duroplast FS 31 DIN 7708.

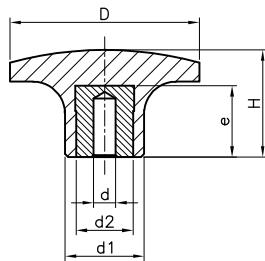
1126T DIN 6336 T WITH THREADED STUD



Code	D	H	d	e	d1	Color
112620501	20	13	M4	15	10	Black
112625501	25	16	M5	20	12	Black
112632504	32	20	M6	15	13	Black
112632501	32	20	M6	20	13	Black
112632506	32	20	M6	25	13	Black
112632509	32	20	M6	30	13	Black
112632502	32	20	M6	40	13	Black
112640503	40	25	M8	20	19	Black
112640501	40	25	M8	27	19	Black
112640514	40	25	M8	33	19	Black
112640506	40	25	M8	40	19	Black
112640502	40	25	M8	47	19	Black
112650511	50	32	M10	20	20	Black
112650512	50	32	M10	33	20	Black
112650501	50	32	M10	44	20	Black
112650502	50	32	M10	64	20	Black
112663501	63	40	M12	40	23	Black
112663502	63	40	M12	60	23	Black
112680501	80	50	M16	55	30	Black
112680502	80	50	M16	75	30	Black

Treated threaded steel stud.
PF: Black Duroplast FS 31 DIN 7708.

1133H THREE PRONG KNOB H WITH SMOOTH HOLE INSERT



Code	D	H	d	e	d2	d1	Color
113330305	30	17	5,25	12	8	11	Black
113340305	40	22	5,25	14	10	15	Black
113350305	50	26	5,25	17	14	20	Black
113360305	60	30	5,25	22	18	25	Black

Treated steel insert.
PF: Black Duroplast FS 31 DIN 7708.